



RAND  
MCNALLY

# TND™ 750 USER MANUAL



## FCC Compliance Statement

This device complies with part 15 of the FCC rules. Operation is subject to the following two conditions: (1) this device may not cause harmful interference, and (2) this device must accept any interference received, including interference that may cause undesired operation.

This equipment has been tested and found to comply with the limits for a Class **B** digital device, pursuant to part 15 of the FCC rules. These limits are designed to provide reasonable protection against harmful interference in a residential installation. This equipment generates, uses, and can radiate radio frequency energy and may cause harmful interference to radio communications if not installed and used in accordance with the instructions. However, there is no guarantee that interference will not occur in a particular installation. If this equipment does cause harmful interference to radio or television reception, which can be determined by turning the equipment off and on, the user is encouraged to try to correct the interference by one of the following measures:

- Reorient or relocate the receiving antenna.
- Increase the separation between the equipment and the receiver.
- Connect the equipment into an outlet that is on a different circuit from the GPS unit.
- Consult the dealer or an experienced radio/TV technician for help.

When using the device, ensure that the antenna of the device is at least 20 cm away from all persons.

## IC Compliance Statement

This device complies with Part 15 of the FCC Rules and Industry Canada license-exempt RSS standard(s). Operation is subject to the following two conditions:

1. This device may not cause interference, and
2. This device must accept any interference, including interference that may cause undesired operation of the device.

This Class **B** digital apparatus complies with Canadian ICES-003.

## IC Caution

Intentional or unintentional changes or modifications to the equipment not expressly approved by Rand McNally could void the user's authority to operate the equipment.

## IC attestation de conformité

Ce dispositif est conforme à la norme FCC Partie 15 et aux norme(s) RSS permis-exempte(s) d'Industrie Canada. L'opération est soumise aux deux conditions suivantes:

3. Ce dispositif ne peut pas provoquer d'interférence nocive et
4. Ce dispositif doit accepter toute interference reçue, y compris les interférences qui peuvent causer un mauvais fonctionnement du dispositif.

Cet appareil numérique de la classe **B** est conforme à la norme NMB-003 du Canada.

## Attention

Les changements ou modifications à l'équipement, que ce soient intentionnelles ou non, non expressément approuvés par Rand McNally pourraient annuler l'autorisation de l'utilisateur à utiliser cet équipement.

IC: 10199A-10011A

## About GPS

The Global Positioning System (GPS) is a constellation of satellites that a GPS receiver uses to calculate geographical positions. To determine a position, data from at least three satellites is required. To determine elevation, the data from four or more satellites is required. Accuracy of the positioning varies from 10 feet to several hundred feet, depending on vehicle placement and the surrounding environment.

Geographical terrain (such as mountains), man-made structures (such as highway overpasses, bridges, and tall buildings), as well as weather can interfere with the GPS signal. For best GPS reception, position the device and mount with a clear line of sight to the sky. Some vehicles may have a limited view of the sky due to metal sun shields or a metallized windshield coating.

Map data includes the geographical coordinates for address locations and points of interest (POIs). With GPS reception, your device calculates a route to your selected location.

### Customer Support

**Call toll-free:**

1-877-446-4863

**Service hours:**

Monday through Friday, 7 a.m. to 6 p.m. CT  
(Except official holidays)

**E-mail:**

TNDSupport@randmcnally.com

Table of Contents

1. Your Device .....	1	Filter POIs .....	27
What's Included .....	2	POIs .....	28
Install the Mount .....	2	Home/Work .....	29
TND™ 750 Hardware .....	3	History & Bookmarks .....	30
2. Getting Started .....	4	Route Map Window .....	31
Connecting to Wi-Fi .....	4	Exits .....	32
Registration .....	4	Route Options .....	33
Transferring User Information from Previous Device .....	4	Route Overview .....	34
Navigating Your TND 750 .....	5	Detour/Avoid .....	35
TND 750 Features .....	6	Weather .....	37
Restart TND 750 .....	7	Traffic .....	38
3. Rand Navigation 2.0 .....	8	Fuel .....	40
Home Screen .....	8	Virtual Dashboard .....	41
Settings .....	9	Fuel Logs .....	42
Destination Search .....	14	Junction View .....	43
Single-line Search .....	15	Turn View .....	43
Guided Search .....	16	Truck Tools .....	44
Using Guided Search .....	17	4. TripMaker® .....	45
New Location .....	18	5. DriverConnect .....	46
My Trips .....	19	6. More Information .....	47
Multi-Stop Trips .....	20		
Trails .....	21		
History .....	22		
Address Book .....	23		
Address Book: Contacts .....	24		
Address Book: Groups .....	25		
POIs .....	26		

### Caution: Important Safety Information

#### Navigation

- Use this device at your own risk.
- Use this navigation app by referring to the display only when safe to do so.
- Traffic regulations always have priority over any instructions from the navigation system.
- Follow navigation system instructions only when local regulations and road traffic allow you to do so.
- Make sure that the mount is securely mounted and properly adjusted before each trip.
- **Note:** If you do not understand the spoken instructions or are unsure of what to do next, refer to the navigation map on the navigation app and follow local traffic regulations/signage.

#### Installation

- Make sure that the mount does not impair the driver's visibility.
- Do not attach the mount within the airbag deployment zone.
- When installing the mount, make sure that it does not pose a risk in the event of an accident.
- Do not run cables directly next to safety-relevant devices and power supplies.
- After installation, check all safety-relevant equipment.
- Connect the wall charger to a 120V or 240V outlet only.
- Connect the vehicle charger to a 12V outlet only.

#### Device

- Do not use sharp-edged objects on the device touch screen.
- The device is not waterproof and is not protected against water damage.
- Protect the device from extreme temperatures. Operating temperature for the device is between 32 degrees F and 120 degrees F.
- Do not open the navigation device casing.
- Do not attempt to replace the battery. Contact Rand McNally Customer Support with questions about the battery.
- Always follow local regulations when disposing of this device.
- **Note:** Make sure that there are no kinks in the cable and that it will not be damaged by any sharp objects.
- **Note:** Use only a moist cloth to clean the navigation device.
- **Note:** Do not pull the cable to unplug the unit.

## What's Included

- 1 Rand McNally TND™ 750 unit
- 2 Smart mount
- 3 Bracket with suction cup
- 4 Vehicle charger
- 5 Micro USB cable
- 6 Anti-glare screen protector



## Install the Mount

**Note:** Follow all local regulations governing the placement of the mount.

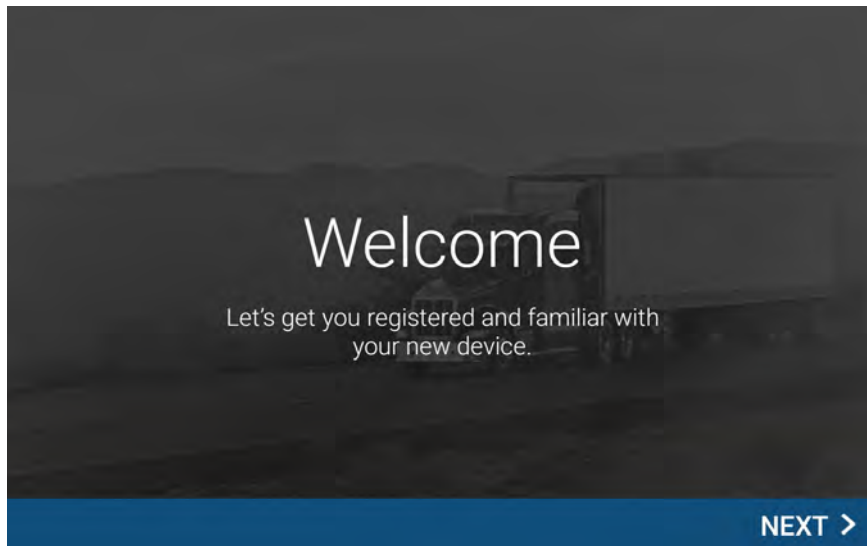
1. Select an area with a line of sight to the sky and GPS satellites.
2. Clean and dry the mounting area.
3. Remove the suction cup protective film.
4. Attach the two pieces of the mount together.
5. Adjust the angle of the mount.
6. Pull the suction cup lever up to release suction.
7. Plug the power cord into the mount and the vehicle's 12-volt power source.
8. Place and hold the mount suction cup against the mounting surface.
9. Press the suction cup lever down until it snaps into place.
10. Snap the tablet onto the mount.
11. Adjust the tablet so that it can be easily seen and does not block the driver's line of sight.

## TND™ 750 Hardware



## TND™ 750 Smart Mount

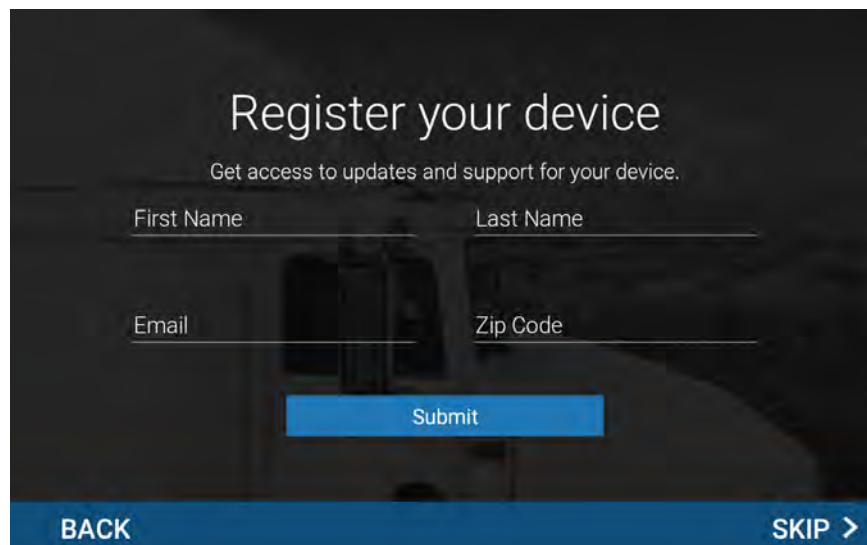




### Connecting to Wi-Fi

When you first turn on your tablet, you'll be asked to select a Wi-Fi network to connect to the Internet. A Wi-Fi connection is required to browse the web, download apps, and use Internet-enabled features such as weather and traffic. Choose your wireless access point or hotspot from the list and type in your password.

**Note:** If you skip this step, you will not be able to use all the features of your tablet. The Truck GPS app, however, does not require a Wi-Fi connection.



### Registration

In the next step, you'll be prompted to register your tablet with Rand McNally. Your registration ensures that you have access to the latest information and updates, as well as customer support.

### Transferring User Information from Previous Device

To move or export user data from a previous Rand McNally TND™ device to a new Rand McNally TND™ device, please visit the following website for specific instructions: **[randmcnally.com/tnd750-support](http://randmcnally.com/tnd750-support)**

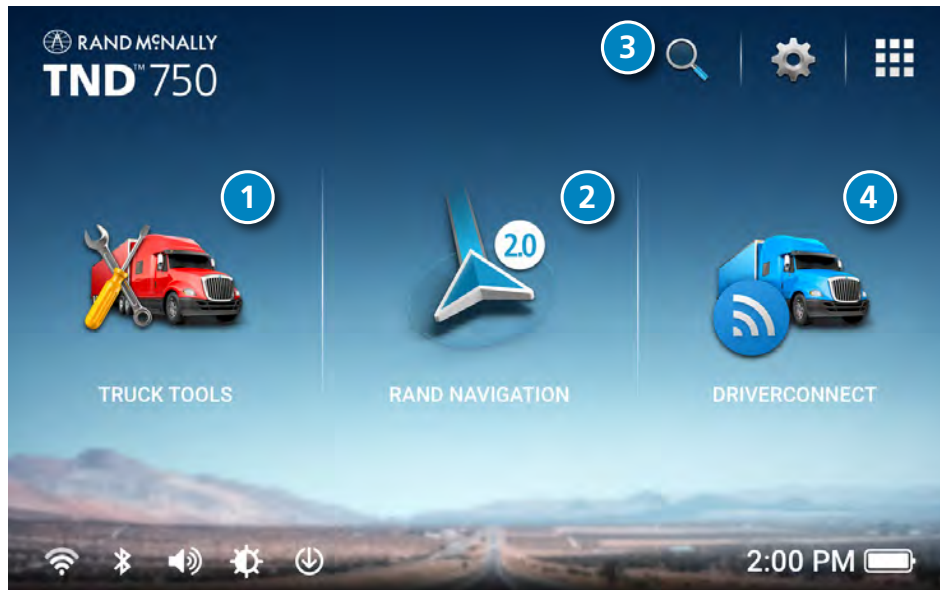


### Navigating Your TND™ 750



#### TND™ 750 Home Screen

- 1 **Settings:** Opens Truck GPS preferences.
- 2 **Wi-Fi® indicator:** Opens Wi-Fi® settings and displays connection strength.
- 3 **Bluetooth® indicator:** Opens Bluetooth® settings and shows connectivity states.
- 4 **Volume indicator:** Opens volume control.
- 5 **Brightness indicator:** Opens brightness control.
- 6 **System update:** Indicates if a system update is available. Opens to initiate download.
- 7 **Current time:** Displays current time.
- 8 **Battery power indicator:** Displays current battery state.



### TND™ 750 Features

- 1 Truck Tools**  
Select to enter truck information, log your fuel and mileage, and access other tools.
- 2 Rand Navigation**  
Show location on the map and view navigation instructions.
- 3 Guided Search**  
Choose a destination by History, Address Book, Points of Interest, or Searching.
- 4 DriverConnect**  
Record, view, and track duty status through your device. Also includes hours of service timers, vehicle inspection reports, and more.

### Restart your TND™ 750

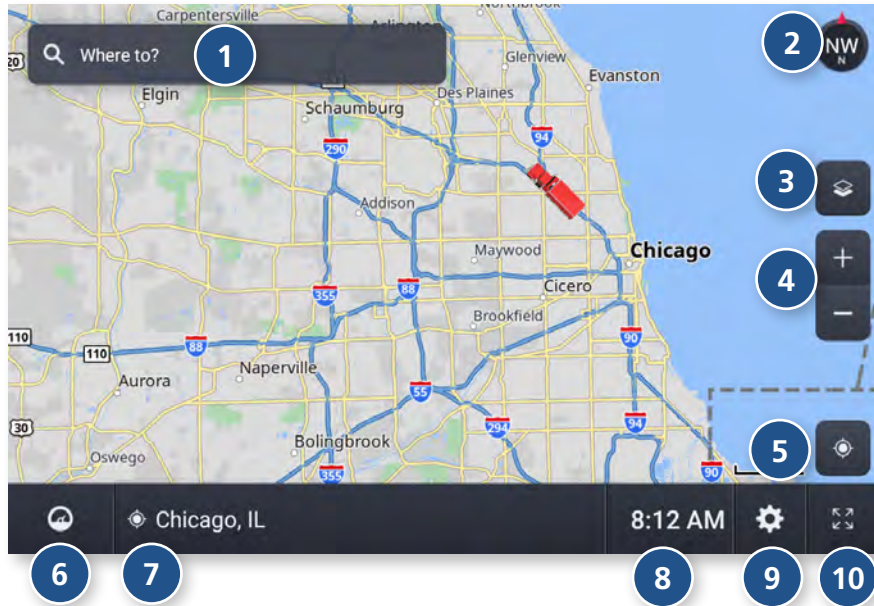
Rand McNally has designed TND™ 750 for speed and reliability. However, from time to time, all Android devices run into problems. If your unit becomes unresponsive for any reason, it's always best to restart the unit by turning it off and on again.

#### Restarting the Device

1. Restart the unit by holding down the power button for 5 seconds, or until you see the **Power Off** screen.
2. Press **Power Off**.
3. Once the unit has shut down, press and hold the power button for 2 to 4 seconds to turn it back on.

If the unit is unresponsive and you don't see the power down button appear on the screen, hold down the power button for 10 to 15 seconds and the device will turn off completely. Once the unit has shut down, press and hold the power button for 2 to 4 seconds to turn it back on.




For additional help and FAQs, visit [randmcnally.com/support](http://randmcnally.com/support).



### Home Screen

- 1 Single-line Search**  
Tap to begin typing, and enter a destination, address, or Point of Interest. You can access any destination from the single-line search.
- 2 Map View Mode**  
Tap to switch the map view: 3D map, North up, or Heading up.
- 3 Wi-Fi Connected Services**  
Tap to enable fuel prices, weather and traffic on the map.
- 4 Zoom**  
Tap + or - to zoom in or out on the map.
- 5 Return to current location**  
Tap to view your current location on the map.
- 6 Virtual Dashboard**  
Tap to view a variety of information concerning your current trip.
- 7 Street/Intersection/Location**  
Tap to toggle between the current street name, the upcoming intersection, or your current location.
- 8 Local Time/Elevation**  
Tap to toggle between Local time and Elevation.
- 9 Settings**  
Tap to access settings, such as: General, Truck Info, Route, Map, and Warnings settings.
- 10 Full Screen**  
Tap to change the view to full screen.

Settings

- 1. Tap **Up**  or **Down**  to view options.
- 2. Tap the option to be set.
- 3. Enter the new information.
- 4. Tap **Back**  to save changes.

Preferences	Page
-------------	------

General

Language.....	10
Unit.....	10
Clock .....	10
Yard time zone.....	10
Vehicle type .....	10
Load prompt .....	10
Mileage log.....	10
Custom POIs.....	10
Touch sound .....	10
System settings.....	10
GPS repair.....	10
System update.....	10
Tutorial.....	10
Contact & about.....	10

Truck Info

Hazmat type .....	11
Weight - empty.....	11
Weight - loaded.....	11
Height.....	11
Width .....	11
Trailers.....	11
Number of axles .....	11

Preferences	Page
-------------	------

Route

Traffic.....	11
Recalculation .....	11
Preferred route .....	11
ETA adjustment .....	11
Turn announcements .....	11
Junction views .....	11
Route avoids .....	11
Permanent avoids .....	11

Map

Day/night mode.....	12
Route color .....	12
Map view mode .....	12
Map auto zoom.....	12
Lane guidance .....	12
POI icons.....	12
Truck POI icons .....	12
Address book icons.....	12
Truck icon .....	12
Bus icon .....	12
Car/Light truck icon .....	12

Preferences	Page
-------------	------

Warnings

Warning type.....	13
Auto dismiss .....	13
Curve.....	13
Hill .....	13
Engine brake .....	13
Narrow road .....	13
Construction area .....	13
Speed limit.....	13
Speed limit change .....	13
Weigh station .....	13
State/Province border.....	13
Timezone change .....	13
Toll booth.....	13
Maintenance.....	13

General	Options	General	Options
<b>Language</b>	English Español Français <i>For the screen and spoken instructions.</i>	<b>Load Prompt</b>	Enabled Always loaded  <i>Specify whether mileage should be calculated with the truck empty, always loaded, or whether to display a prompt for each route. When set to Enabled, each time you tap Start a New Route, a window displays asking if the truck is loaded or empty.</i>
<b>Units</b>	U.S. Standard Metric Automatic	<b>Mileage Log</b>	Truck & bus Car only Truck & Car Disabled
<b>Clock</b>	12-hour format 24-hour format  <i><b>Note:</b> Some tools and settings may not be available in car mode.</i>	<b>Custom POIs</b>	Tap to display the list of custom Points of Interest
<b>Yard Time Zone</b>	Hawaii-Aleutian Time Alaska Time Pacific Time Arizona Mountain Time Central Time Eastern Time Indiana (East) Atlantic (Canada) Time Newfoundland Time	<b>Touch Sound</b>	On/Off slider
<b>Vehicle Type</b>	Truck Bus Car/Light truck  <i>Controls how routes are calculated.</i>	<b>System Settings</b>	Tap to display Android System settings
		<b>GPS Repair</b>	Tap to update missing, broken, and/or out-of-date files in the GPS. An internet connection is required.
		<b>System Update</b>	Tap to perform system update
		<b>Tutorial</b>	View on-device tutorial
		<b>Contact &amp; About</b>	Tap to show version information and copyrights.

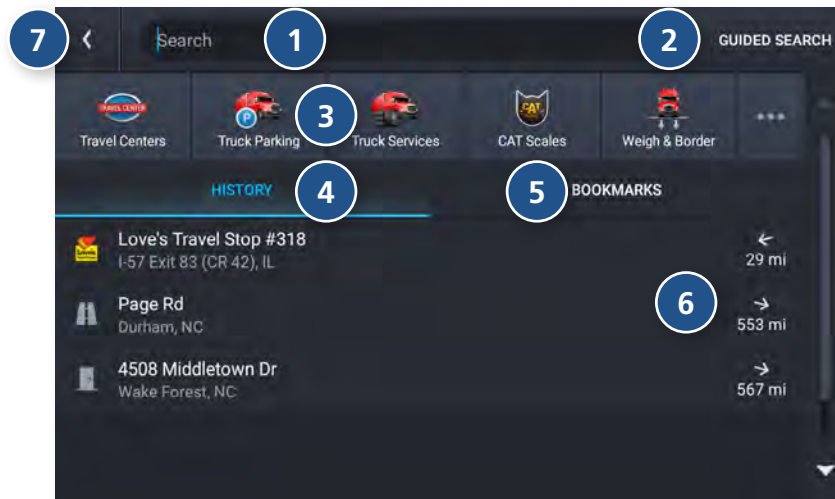
Truck Info	Options	Route	Options
<b>Hazmat Type</b>	None Explosives Gases Flammable Liquids Flammable Solids Oxidizers Poison Radioactive Corrosives PIH Other	<b>Traffic</b>	On/Off slider (requires Wi-Fi connection)
		<b>Recalculation</b>	Auto Manual
		<b>Preferred Route</b>	Fastest route Shortest route
		<b>ETA Adjustment</b>	Increase ETA more Increase ETA some ETA ok Decrease ETA some Decrease ETA more  <i>Set adjustments to your ETA due to weather or traffic conditions. You can add (increase) time to make the trip take longer or subtract (decrease) time to make the trip take less time.</i>
<b>Weight (Empty)</b>	Click the pencil icon to enter a numeric value.		
<b>Weight (Loaded)</b>	Click the pencil icon to enter a numeric value.  <i>See <b>Load Prompt</b> in <b>General preferences</b>.</i>	<b>Turn Announcements</b>	Set three distances at which you want to be warned about an upcoming turn. The first announcement will be the farthest from the turn and the third the closest to it.
<b>Height</b>	Click the pencil icon, and use the dials to select your vehicle's height.		
<b>Width</b>	Click the pencil icon, and use the dials to select your vehicle's width.	<b>Junction Views</b>	Set the distance before the maneuver at which the highway junction view screen appears.
<b>Trailers</b>	Straight 48' 53' Double Triple	<b>Route Avoids</b>	Select/de-select from the list of options: Tollways, Freeways, Ferries, Tunnels, Small Roads, U-Turns, Cross-country borders, Dirt roads
<b>Number of Axles</b>	Use the dial to select the number of axles.	<b>Permanent Avoids</b>	Tap to manage your list of areas and roads to permanently avoid.

Map	Options	Map	Options
<b>Day/Night Mode</b>	Automatic Day Night	<b>Truck POI Icons</b>	On/Off slider  Select icons to display on map  <i>Select travel centers, service, weigh stations and truck POIs to display on the map. Tap any category to fill in the square and display those icons.</i>
<b>Route Color</b>	Tap the color to select.	<b>Address Book Icons</b>	On/Off slider  <i>Address book entries appear as pushpin icons unless they are assigned to a group.</i>
<b>Map View Mode</b>	Heading up North up 3D view	<b>Truck Icon</b>	Use the arrows to select different icons to display when using the truck setting. Use the provided colors to select the truck icon color.
<b>Map Auto Zoom</b>	On/Off Auto scale Street scale City scale State scale  <i>Set to street/city/state scale to specify the maximum scale of the zoom.</i>	<b>Bus Icon</b>	Use the arrows to select different icons to display when using the bus setting. Use the provided colors to select the bus icon color
<b>Lane Guidance</b>	On/Off slider  <i>When on, the map guides you to the correct lane in preparation of upcoming turns.</i>	<b>Car/Light truck Icon</b>	Use the arrows to select different icons to display when using the car setting. Use the provided colors to select the car icon color
<b>POI Icons</b>	On/Off slider  Select icons to display on map  <i>Select restaurants, banks, and other consumer POIs to display on the map. Tap any category to fill in the square and display those icons.</i>		



Warnings	Options
<b>Warning Type</b>	None Audio & Visual Visual only Audio only
<b>Auto Dismiss Warnings</b>	Never After 2 seconds After 10 seconds After 30 seconds  <i>Height and weight violations will not be auto dismissed.</i>
<b>Curve Warnings</b>	On/Off slider Click the pencil to manually edit, or use the slider to set distance.
<b>Hill Warnings</b>	On/Off slider Click the pencil to manually edit, or use the slider to set distance.
<b>Engine Brake Warnings</b>	On/Off slider Click the pencil to manually edit, or use the slider to set distance.
<b>Narrow Road Warnings</b>	On/Off slider Click the pencil to manually edit, or use the slider to set distance.
<b>Construction Area</b>	On/Off slider Click the pencil to manually edit, or use the slider to set distance.

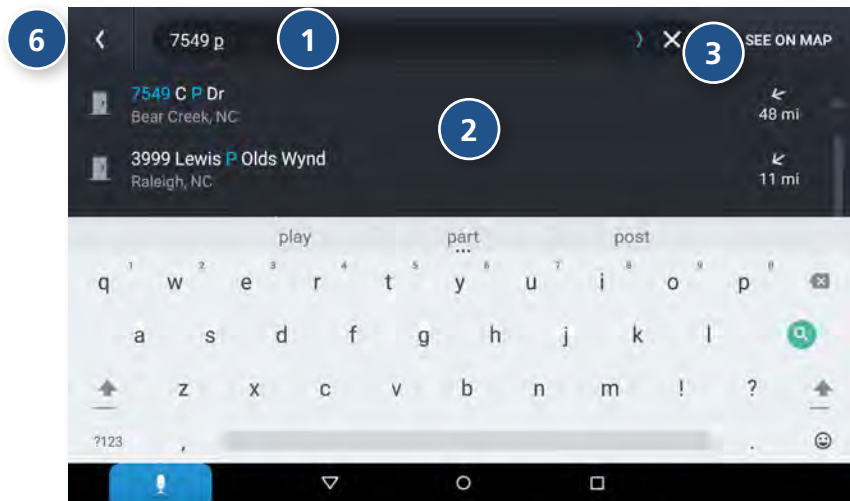
Warnings	Options
<b>Speed limit</b>	On/Off slider Set the amount over the posted limit at which the warning appears. Set a user-defined maximum speed to be warned whenever the truck exceeds that speed, regardless of posted speed limits.
<b>Speed Limit Change</b>	On/Off slider Click the pencil to manually edit, or use the slider to set distance.
<b>Weigh Station</b>	On/Off slider Click the pencil to manually edit, or use the slider to set distance.
<b>State/Province Border</b>	On/Off slider Click the pencil to manually edit, or use the slider to set distance.
<b>Timezone Change</b>	On/Off slider
<b>Toll Booth Alert</b>	On/Off slider Click the pencil to manually edit, or use the slider to set distance.
<b>Maintenance</b>	On/Off slider



### Destination Search

To access this window from the Home Screen, tap **Where to?**

- 1 **Single-line Search**  
Begin typing to search for a destination.
- 2 **Guided Search**  
Tap to access the guided search options.
- 3 **Points of Interest**  
Tap to search for a point of interest (POI), such as a travel center, restaurant, etc.
- 4 **History**  
Tap to route to a recently entered location.
- 5 **Bookmarks**  
Tap to view a list of saved locations.
- 6 **Distance**  
Displays the distance to each destination in the list.
- 7 **Back**  
Tap to return to the navigation screen.



### Single-line Search

To access the single-line search window from the Home Screen, tap **Where to?**

From this screen, you can begin typing an address, point of interest, or any other destination type. The single-line search will return matching results below.

#### 1 Address/Text Search

Search for addresses, streets, cities and points of interest.

- Address searches should include either a city or postal code.
- Avoid using punctuations.
- Avoid using street prefixes and suffixes.

#### 2 Matching Results

Destinations that match your search terms display here.

The address, city, and state display to the left.

The distance from your current location displays on the right.

Tap a destination to begin navigation.

#### 3 See on Map

Tap to view the listed destinations on a map in a split-screen view.

#### 4 Selected Destination

Tap a destination from the list to select it.

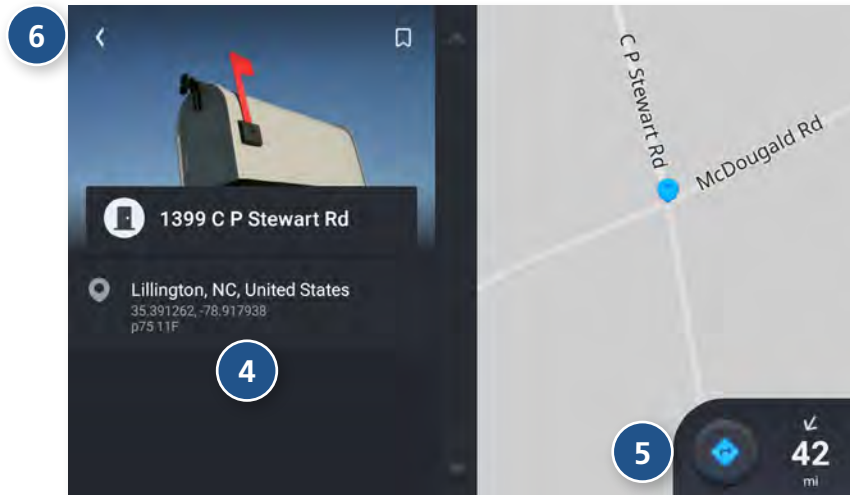
The address, coordinates, and Motor Carriers' Road Atlas reference page are displayed.

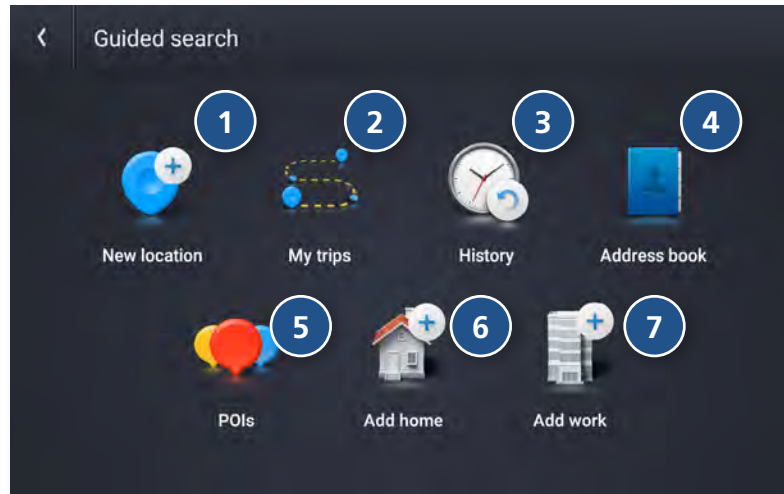
#### 5 Navigate

Tap to begin navigation to the selected destination.

#### 6 Back

Tap to return to the previous screen.





### Guided Search

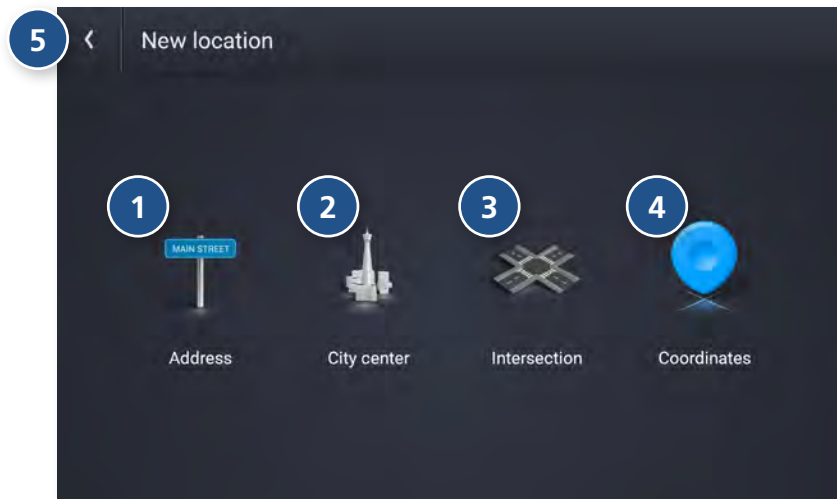
- 1 New Location**  
Tap to route to a destination by entering the address, city center, intersection, or by entering latitude and longitude coordinates.
- 2 My Trips**  
Tap to review your saved trips.
- 3 History**  
Tap to review your recent destinations.
- 4 Address Book**  
Tap to select a destination from your Address Book.
- 5 POIs**  
Tap to begin a point of interest search.
- 6 Home**  
Tap to route to your stored Home location.
- 7 Work**  
Tap to route to your stored Work location.



### Using Guided Search

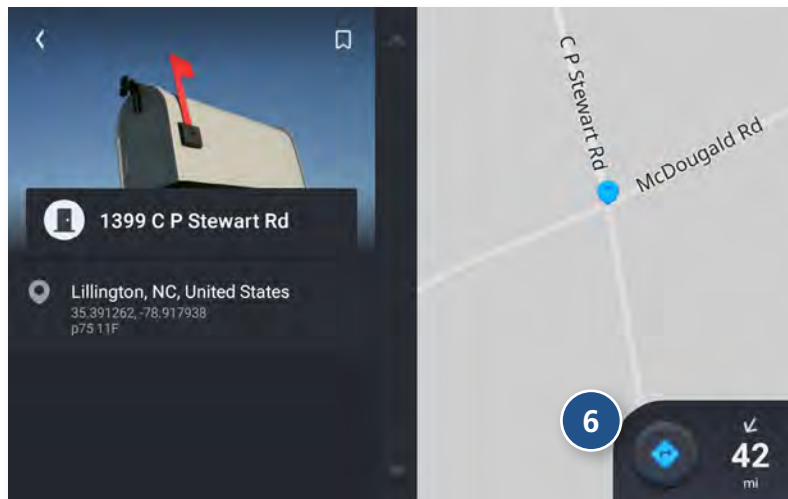
The Guided Search Keyboard in the Rand Navigation 2.0 app helps you quickly locate your destination.

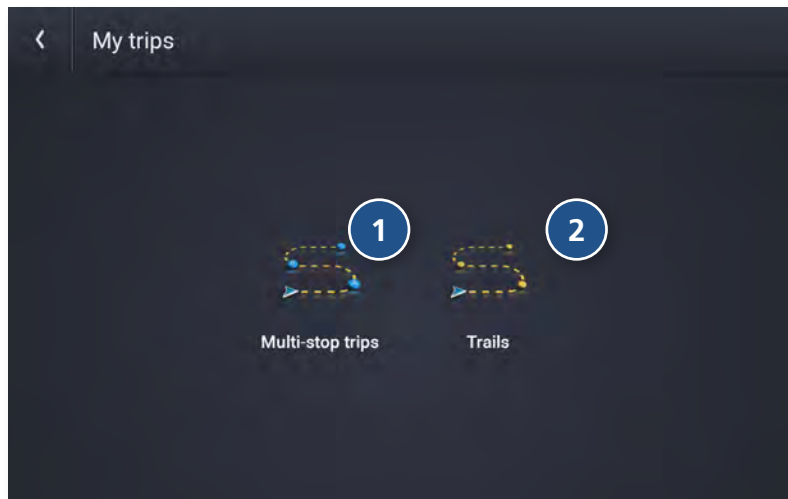
- 1 Auto-Complete Keyboard**  
As you key in characters, the keyboard only displays the next possible letter or number. Letters and numbers that cannot be entered in sequence are disabled. Results are displayed as you key in characters.
- 2 Destination Entry**  
The top bar displays the current search.
- 3 Guided Search: City/Postal Code**  
Displays the available city/postal code selections based on the information you have typed in. Tap a result to advance.
- 4 Guided Search: Street**  
Displays the available street selections based on the city you selected, and the information you have typed in. If the next letter in the street name cannot be selected on the keyboard, tap Expand Search to search a larger area. Tap a result to advance.
- 5 Guided Search: House Number**  
Displays the available house numbers based on the city and street selected, and the information you have typed in. Tap a result to advance.



#### New Location

- 1 Address**  
Navigate to an address by entering the city (or postal code), street, and house number.
- 2 City Center**  
Navigate to a city center.
- 3 Intersection**  
Navigate to the intersection of two roads within a specified city.
- 4 Coordinates**  
Navigate to a coordinate location.  
Note: Rather than a city/street search, using the Coordinates Guided Search prompts you to enter a numeric latitude and longitude value.
- 5 Back**  
Tap to return to the previous screen.
- 6 Navigate**  
Once you select your destination through the guided search, click the Navigate button to begin navigation.





### My Trips

1

#### Multi-Stop Trips

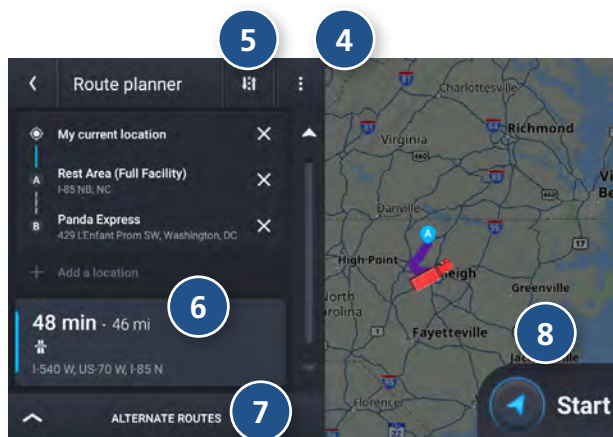
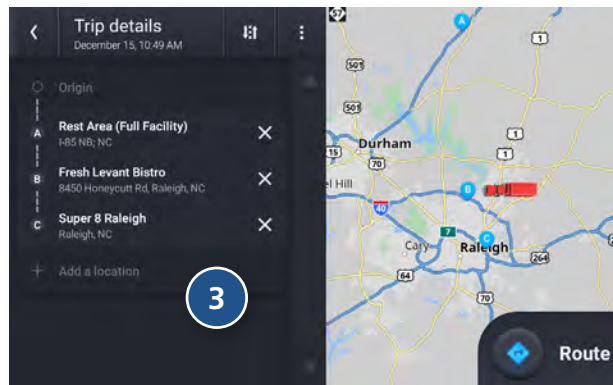
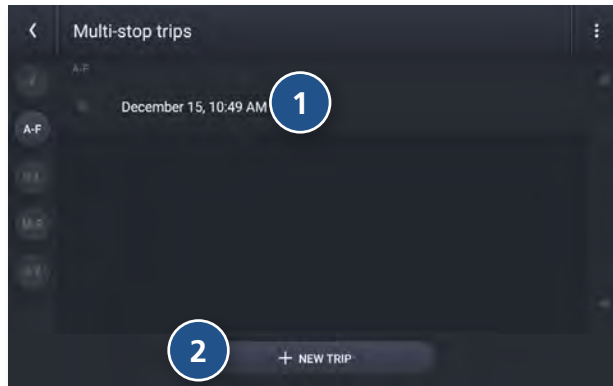
Tap to view a list of saved multi-stop trips or to create a new one.

2

#### Trails

Use Trails to record a “bread-crumbs” path where your truck has traveled.



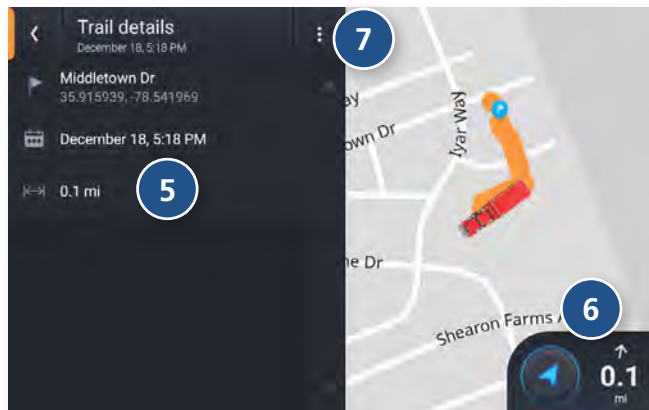
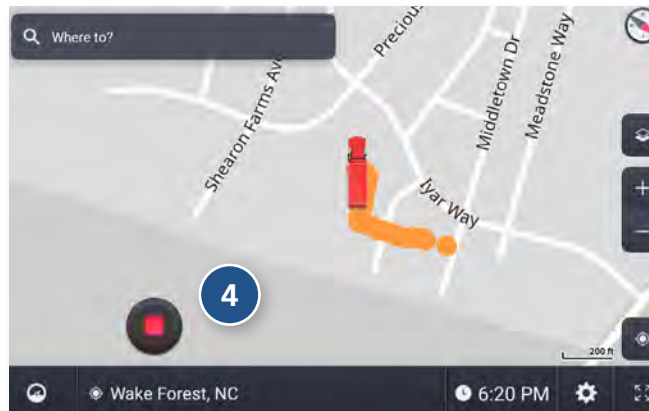


### Multi-Stop Trips

Displays a list of recent destinations.

- 1 Tap to review and edit a saved trip.
- 2 Tap + New Trip to start a new multi-stop trip.
- 3 Trip details:  
Displays the stops along your trip.  
Tap the X to remove a stop.  
Tap + Add a Location to add a new stop.
- 4 Tap to view Route avoids, Route details, and Overview.  
Also tap to Save to My trips.
- 5 Tap to Reverse or Reorder your stops (manually or automatically).
- 6 Displays the travel time, traffic delays (if any), and toll costs for the first leg of your trip.
- 7 Tap to compare and select alternate routes.
- 8 Tap to start the trip.

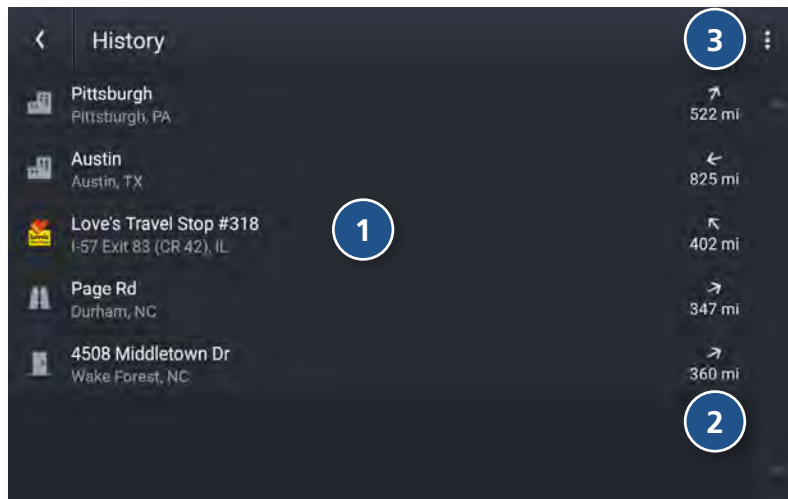




#### Trails

Use Trails to record a “bread-crum” path where your truck has traveled. The Trails feature is beneficial when traveling in areas where there is no road network.

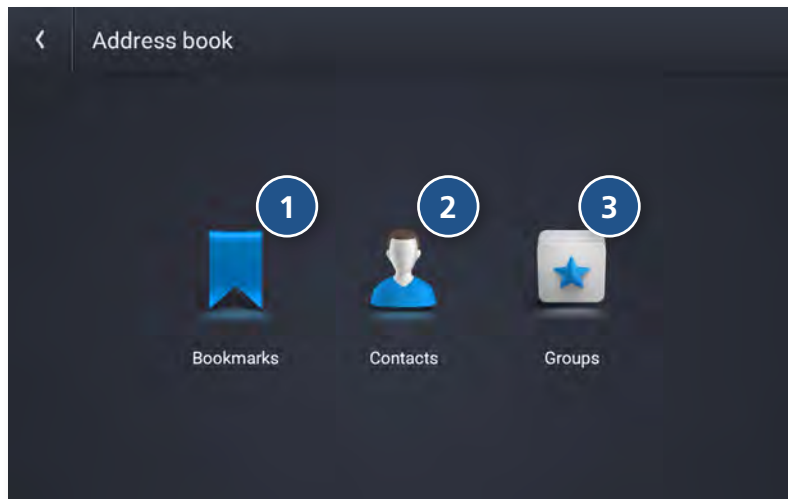
- 1 Tap to open an existing trail.
- 2 Tap to record a new trail.
- 3 Tap to edit or delete a trail.
- 4 Tap to stop recording.
- 5 View details about the trail.
- 6 Tap to begin navigation. Routing to an existing trail will take you to the start of the trail. You can then follow the rest of the trail to your destination.
- 7 Tap to edit or delete the trail.



### History

Displays a list of recent destinations.

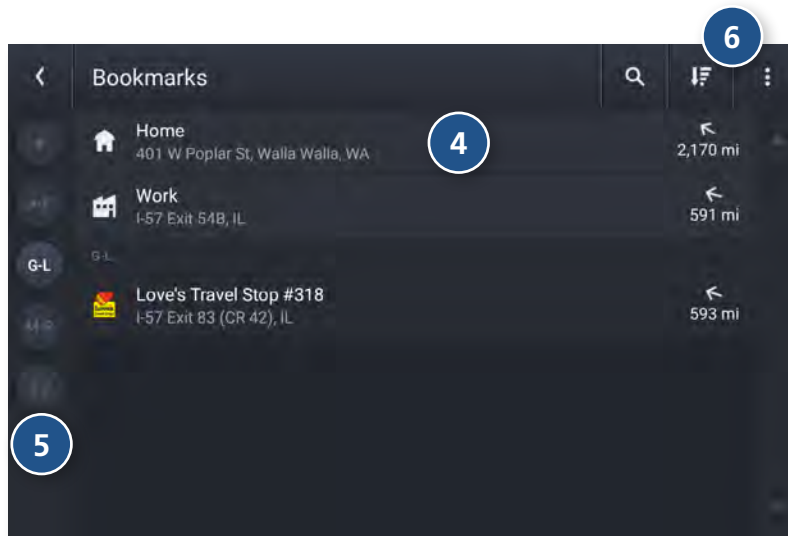
- 1 Destination**  
Tap an entry in the list to navigate to the destination.
- 2 Distance**  
Displays the distance to each destination from your current location.
- 3 Options**  
Tap to access additional options.  
Edit: Allows you to select and delete an entry in the history list.  
Clear History: Deletes all entries.

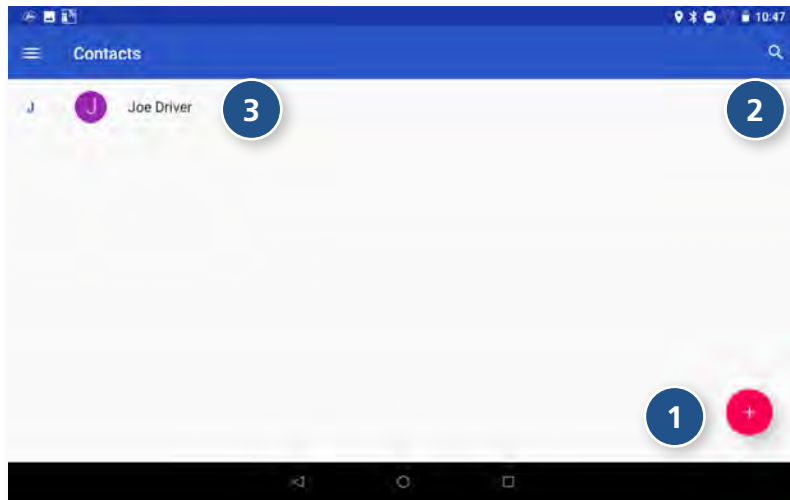


### Address Book

Displays your saved bookmarks, contacts, and group.

- 1 Bookmarks**  
Navigate to a saved address.
- 2 Contacts**  
Navigate to the stored address from a saved contact.  
Note: Contacts are stored in the Contacts app. You can add contacts manually or import them.
- 3 Groups**  
Options for organizing your bookmarks and contacts into groups.
- 4 Destination**  
Tap a bookmark to navigate to the destination.
- 5 Alphabetic Organization**  
Tap a letter group to view bookmarks alphabetically. This is useful if you have a lot of bookmarks, and they are difficult to find.
- 6 Options**  
Tap to sort, add, and delete bookmarks.

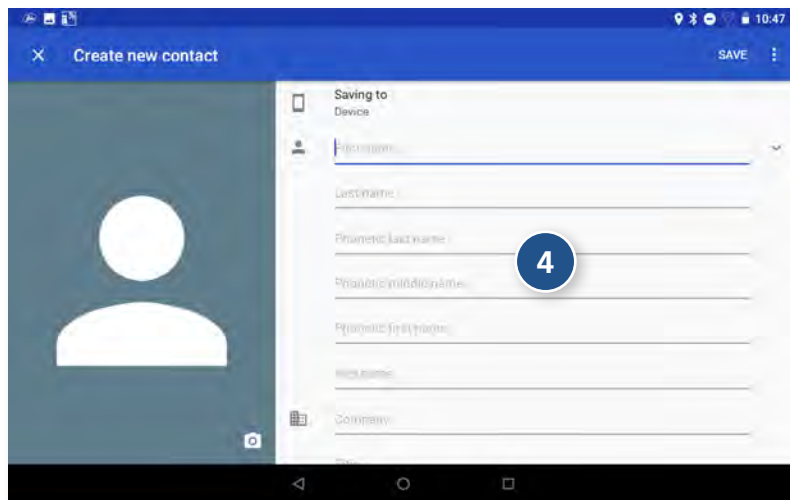


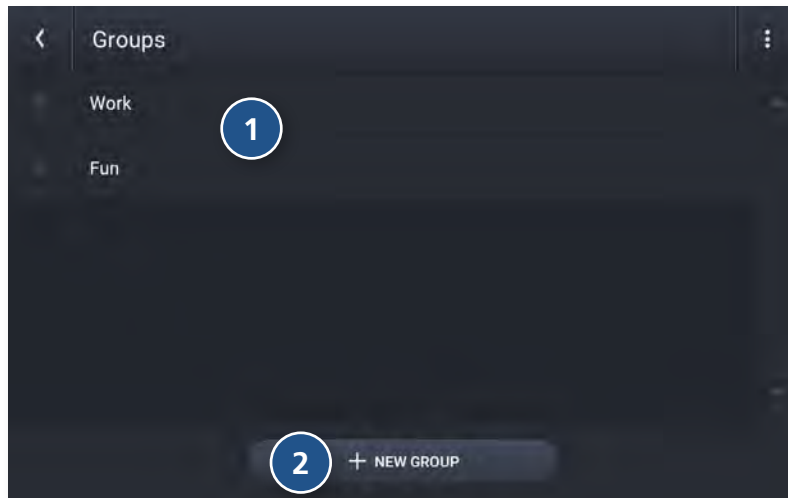


#### Address Book: Contacts

In order to use contacts for navigation, you first need to set them up in the Rand Navigation 2.0 app. You can add contacts manually or import them.

- 1 Create a New Contact**  
Tap to manually create a new contact.
- 2 Search**  
Tap to search for an existing contact.
- 3 View**  
Tap a contact's name to view and edit information about that contact.
- 4 Edit Contact**  
Enter information about the contact.  
Tap Save to save and return to the previous screen.

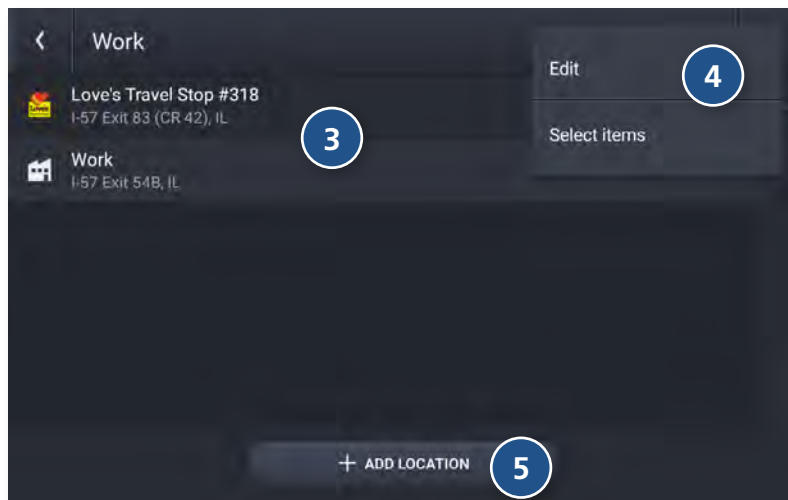


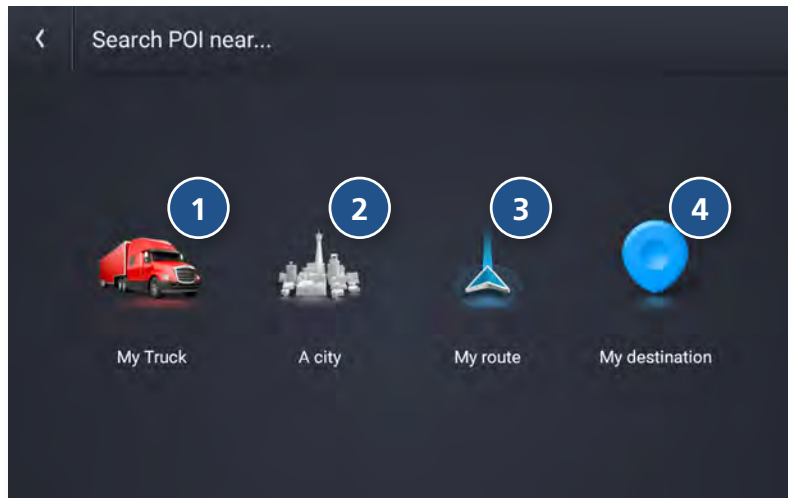


### Address Book: Groups

Use Groups to organize your contacts and destinations into categories for easier searching.

- 1 Available Groups**  
Displays the groups you have created.
- 2 New Group**  
Tap to create a new group.
- 3 Group Destination**  
Displays the destinations stored in the selected group.  
Tap a destination to begin navigation.
- 4 Group Options**  
Tap in the corner to edit or delete destinations in a group.
- 5 Add Location**  
Tap to add a new location to the group.  
You can add a new address, or select from your history, bookmarks, or POIs.

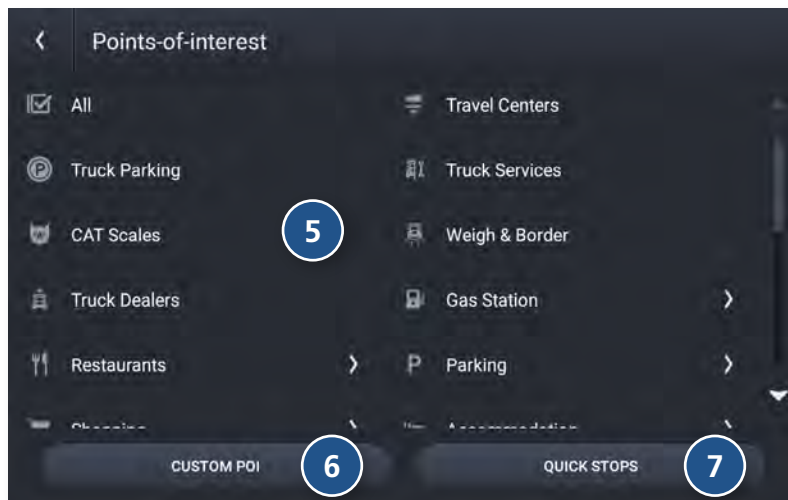


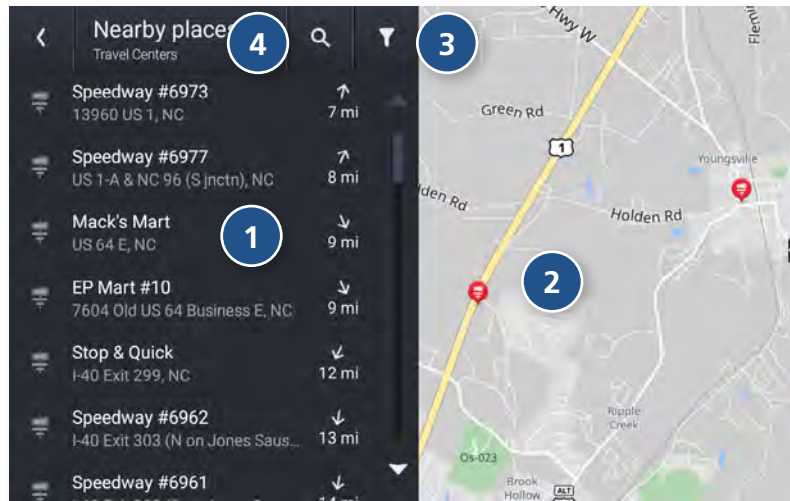


### POIs

Displays Points of Interest (POIs) near your current location, near a specific location, along your intended travel route, or near your destination.

- 1 **My Truck**  
Tap to display POIs near your current location.
- 2 **A city**  
Tap to display POIs near a specific city.
- 3 **My route**  
Tap to display POIs along your route.
- 4 **My destination**  
Tap to display POIs near your destination.
- 5 **POI Categories**  
Tap to select the POI category.  
Note: Some categories may have multiple sub-categories to select from.
- 6 **Custom POI**  
Tap to display custom points of interest from an import.
- 7 **Quick Stops**  
Displays a list of commonly searched POI categories.

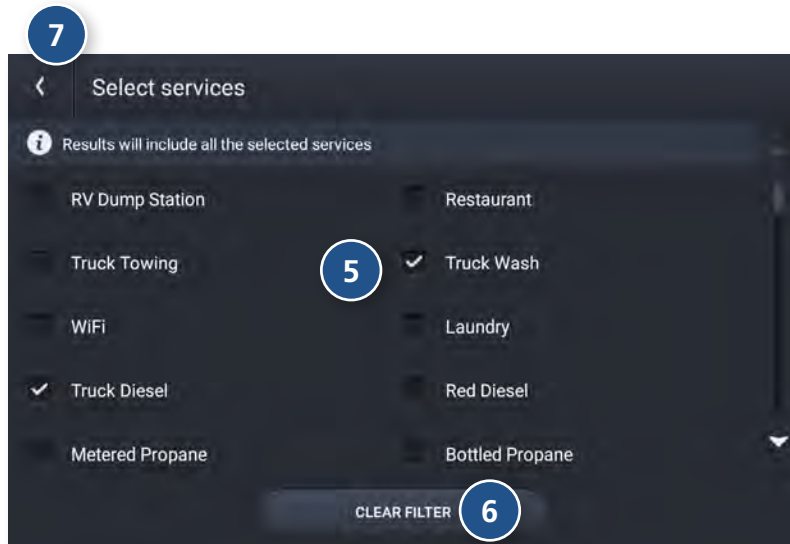




### Filter POIs

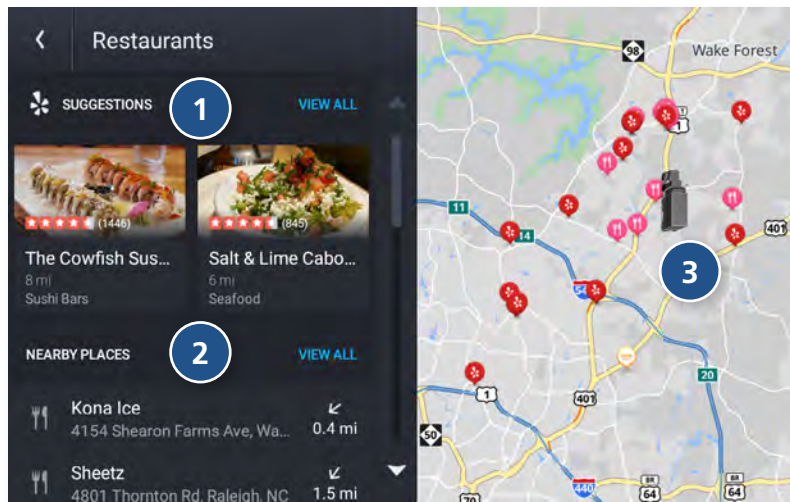
Truck-related points of interest such as Travel Centers and Truck Services can include several amenities. To select only the locations with the amenities that you are interested in, filter your search results.

- 1 **Nearby Places**  
Lists destinations near your location that match the category selected.
- 2 **Map**  
Displays destinations near your location.
- 3 **Filter**  
Search for points of interest by selecting available services.
- 4 **Search**  
Search for points of interest by typing the name.
- 5 Tap a checkbox for a subcategory to include it in your search.
- 6 Tap to clear the filters.
- 7 Tap to go back and view the filtered POI list.



Please note that filter selections will remain active until you clear the filter.





### POIs

When you select a POI category, a list of suggestions provided by Yelp (if applicable) and a list of nearby places display.

Note: A Wi-Fi connection is required in order to display Yelp information.

#### 1 Yelp Suggestions

Displays top-rated suggestions from Yelp.

Tap a destination to view additional information and begin navigation.

#### 2 Nearby, Along route or My destination

Displays matching POIs near the location specified, along with the distance to each destination.

Tap a destination to view additional information and begin navigation.

#### 3 Map

Displays POIs near your truck, a city, your route, or your destination.

#### 4 More information

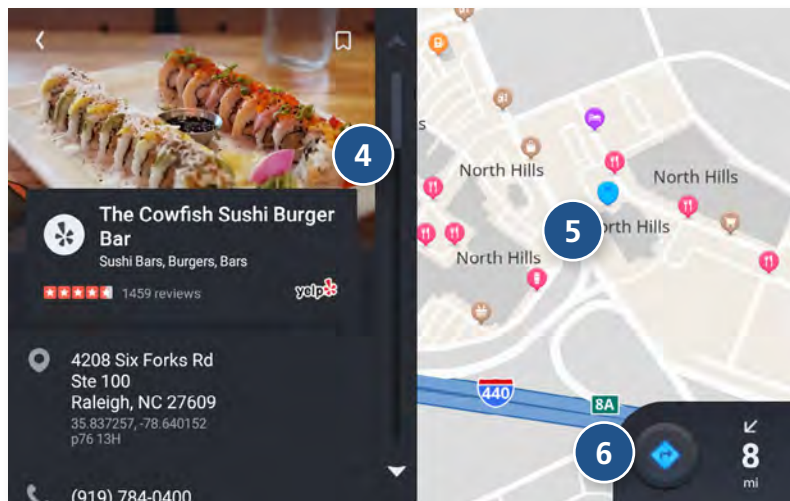
Displays additional information about the POI, including Yelp review information, address and phone number. Tap the Reviews link to view reviews on yelp.com.

#### 5 POI Destination

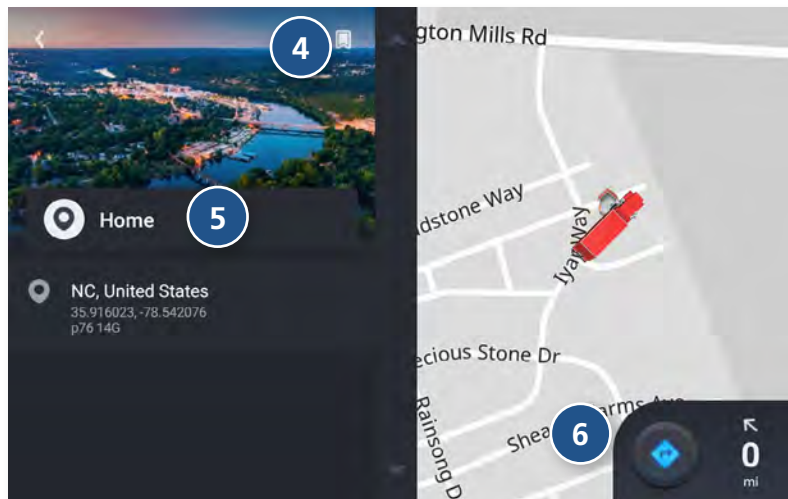
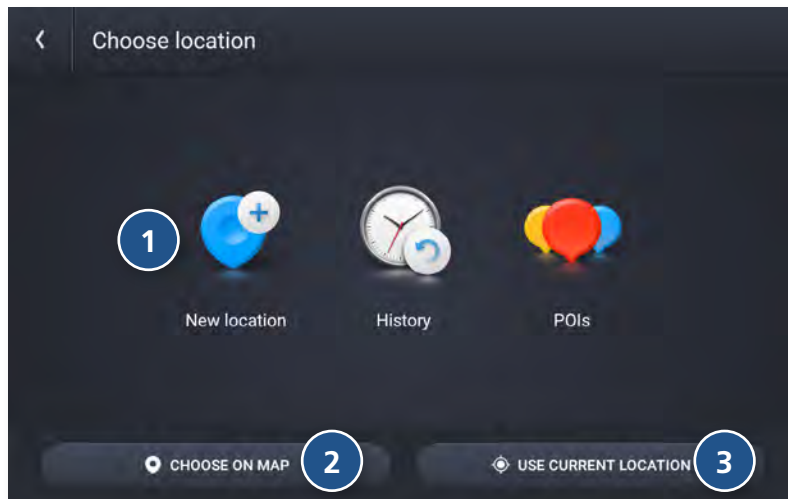
Displays the selected POI on the map, along with the locations of other nearby places.

#### 6 Navigate

Tap to begin navigation to the selected POI.







### Home/Work

You can set bookmarks for a Home and a Work location. This is useful so you can quickly navigate to these destinations.

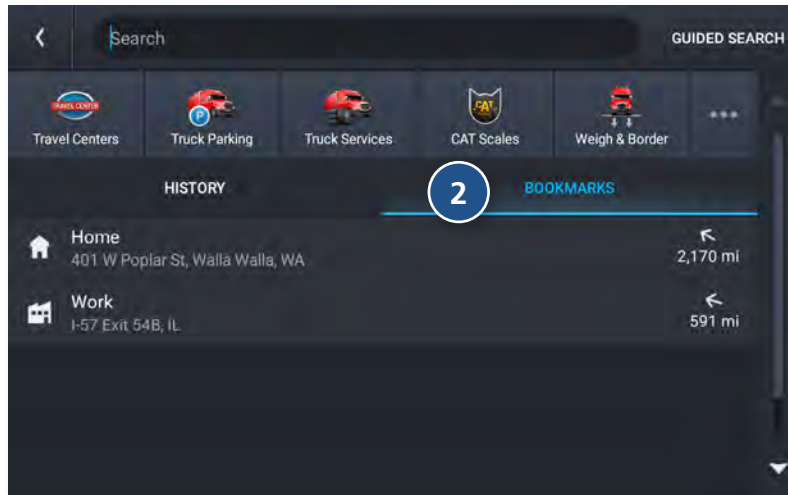
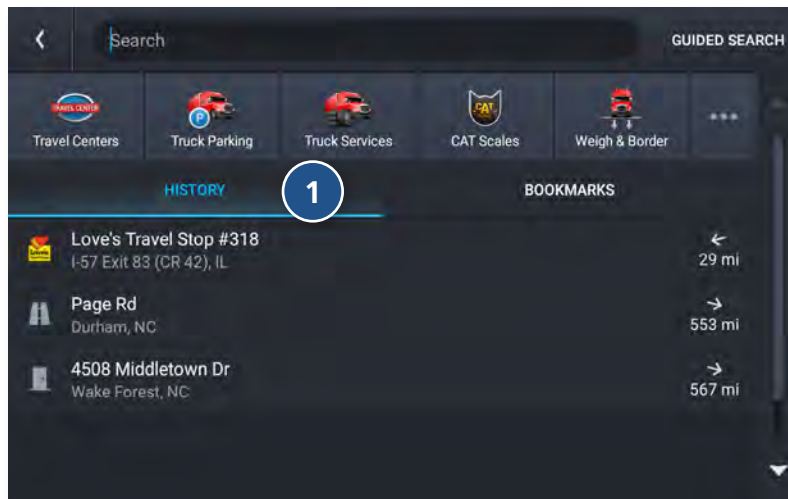
Tap Add Work or Add Home to set these locations.

- 1 Select Location**  
Tap New Location, History, or POIs to select a Home or Work destination from among these options.
- 2 Choose on Map**  
Tap to set your Home or Work location by selecting a point on the map.
- 3 Use Current Location**  
Tap to set your Home or Work location to your current location.
- 4 Create/Remove Bookmark**  
Use this button to create or remove a Bookmark.
- 5 Home/Work Information**  
Displays information about your Home or Work location.
- 6 Navigate**  
Tap to navigate to Home or Work.

#### History & Bookmarks

- 1 History**  
Displays your destinations that you have previously navigated to.
- 2 Bookmarks**  
Displays your saved locations.

For both History and Bookmarks:  
Tap on the title of the tab to display the list of destinations.  
Tap the destination to begin navigation.

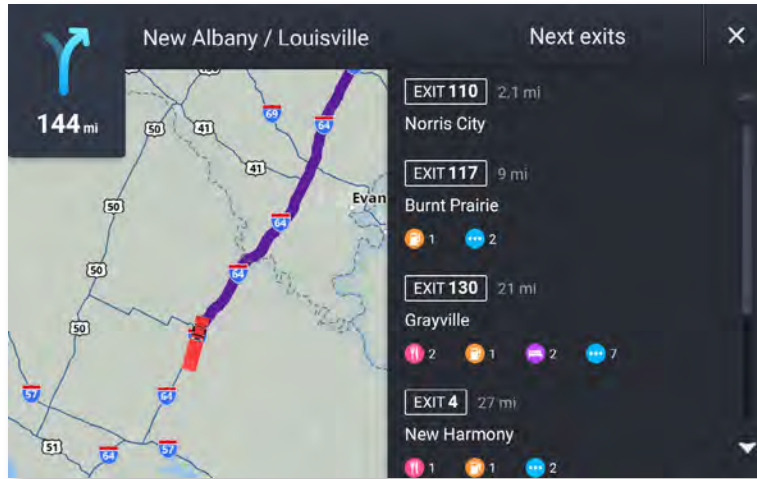


### Route Map Window



- 1 Next Maneuver**  
Instructions for your next maneuver.
- 2 Road Name**  
Next maneuver street name or highway sign.
- 3 Exits**  
Check upcoming exits for food, gas, hotels and other places.
- 4 Route Options**  
Tap to display additional options, including adding a stop, detours, and ending navigation.
- 5 Wi-Fi Connected Services**  
Tap to enable fuel prices, weather and traffic on the map.  
Note: These options require a Wi-Fi connection.
- 6 Zoom In/Zoom Out**
- 7 Volume Control**
- 8 Expanded Map Display**  
Tap to remove additional options from the map screen.

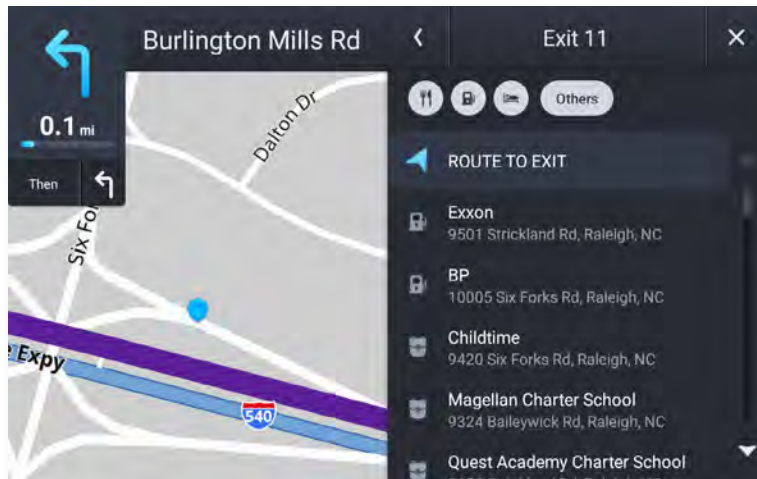
- 9 Settings**  
Tap to open the Settings screens.
- 10 ETA/Time/Distance**  
Tap to change the view between the following options:  
ETA, Yard ETA, Remaining Time, Yard Time, and Elevation.
- 11 Location View**  
Tap to toggle between displaying the current location by city, street name, or by the next cross street.
- 12 Virtual Dashboard**  
Tap to view information about your current location, route, trips, and more.
- 13 Current Speed**  
Displays your current speed and turns red for speed warnings.
- 14 Speed Limit**  
Posted speed limit for your vehicle setting.  
Tap to open a screen to submit a speed limit correction.
- 15 Map**  
Displays the map, your current route, and your vehicle's current location.
- 16 Map View Mode**  
Tap to switch the map view: 3D map, North up, or Heading up.
- 17 Distance Remaining**  
Displays a progress bar indicating the distance remaining to your destination.

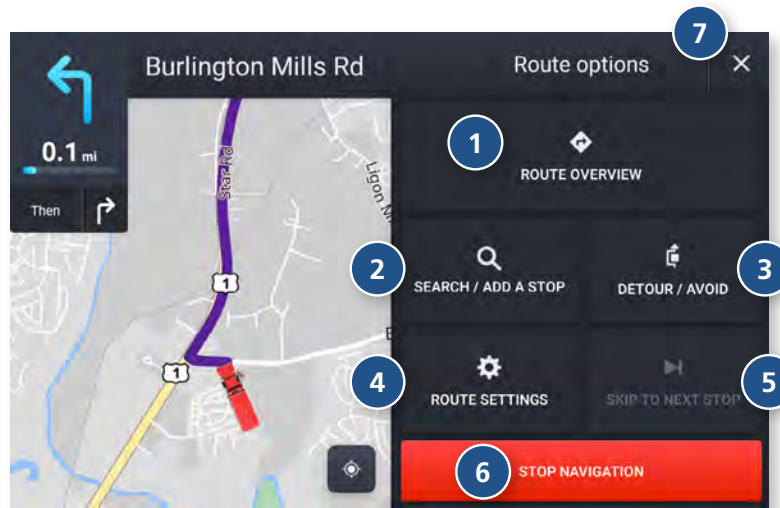


#### Exits

Slide out to show points of interest at upcoming exits. The list displays the distance to the next exit, exit name and number, and a count of available amenities.

1. Tap on an exit to display a list of POIs at the exit.
2. Tap the icon to display locations by category.
3. Tap on any item in the list to view additional information or to route to the POI.

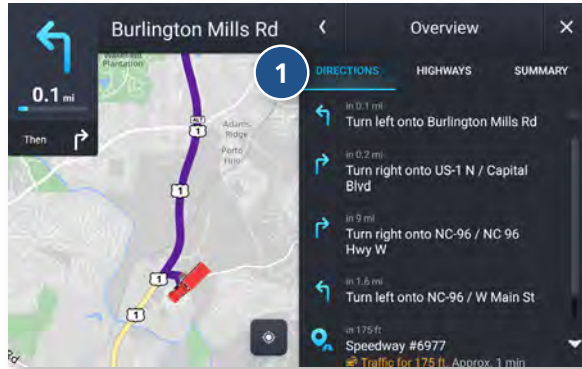




### Route Options

- 1 Route Overview**  
Displays the directions, highways and summary of your trip.
- 2 Search/Add Stop**  
Tap to add an additional destination(s) to your route.
- 3 Detour/Avoid**  
Tap to manage locations to avoid on the route, and automatically calculate detours around them.
- 4 Route Settings**  
Tap to open the Route tab of the Settings screen.
- 5 Skip to Next Stop**  
Tap to skip the next destination in your route, and continue.
- 6 Stop Navigation**  
Tap to cancel the current route and return to the home screen.
- 7 Exit**  
Tap to close Route Options and resume your trip.

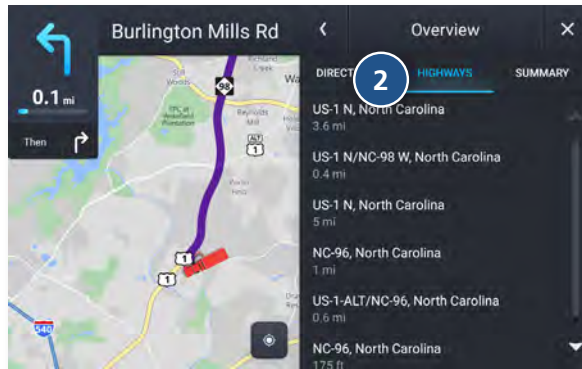
### Directions Tab



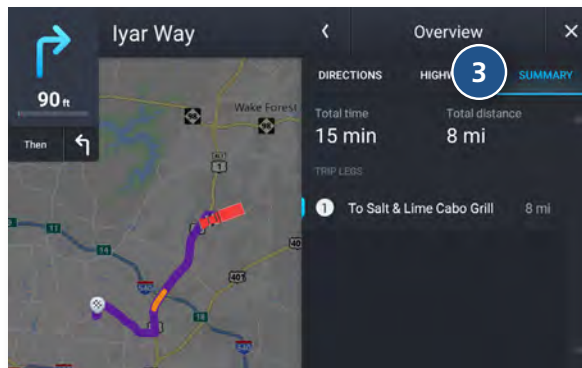
### Route Overview

- 1 Direction Tab**  
Displays the turn-by-turn directions for the current route.
- 2 Highways Tab**  
Displays the highways along your route, with the number of miles to travel on each.
- 3 Summary Tab**  
Displays the total travel time and distance for your route, as well as summaries for each leg of the trip (for multi-stop trips).

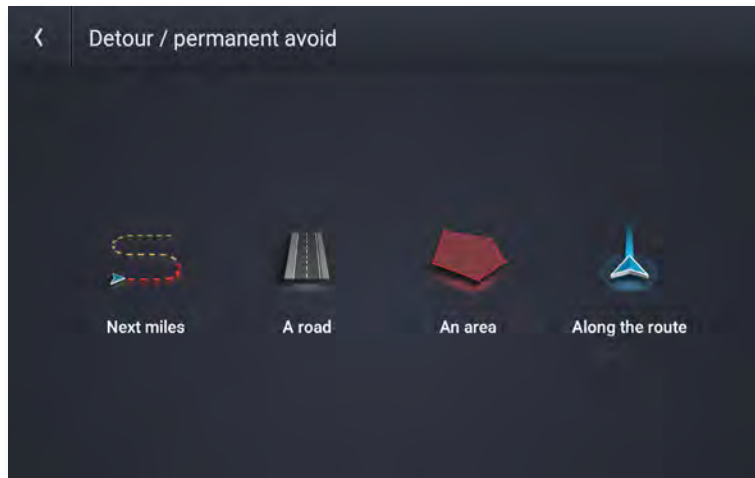
### Highways Tab



### Summary Tab



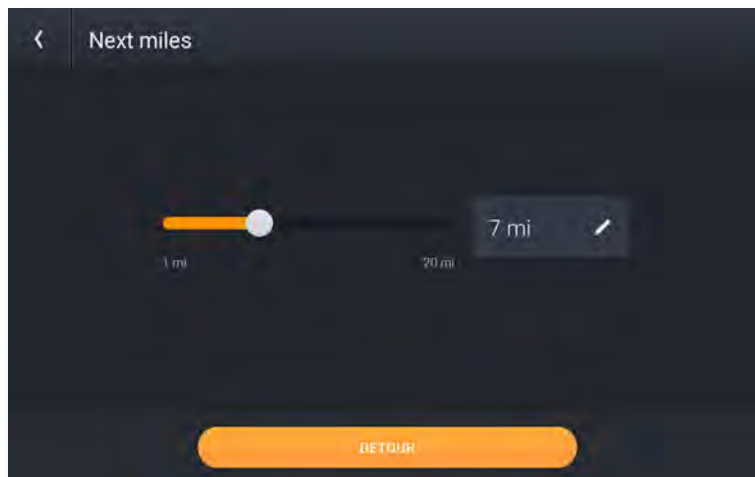




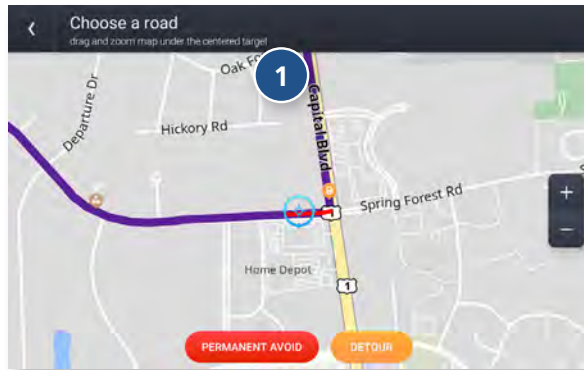
#### Detour/Avoid

From Route Options, tap Detour/Avoid. There are four options available to set up detours and permanent avoids:

1. Next miles allows you to detour a certain number of miles. Use the slider to set the number of miles to detour/avoid.
2. A road allows you to avoid a specific road.
3. An area allows you to draw a polygon on the map. You will be routed around this area.
4. Along the route allows you to select a step in your navigation to avoid.

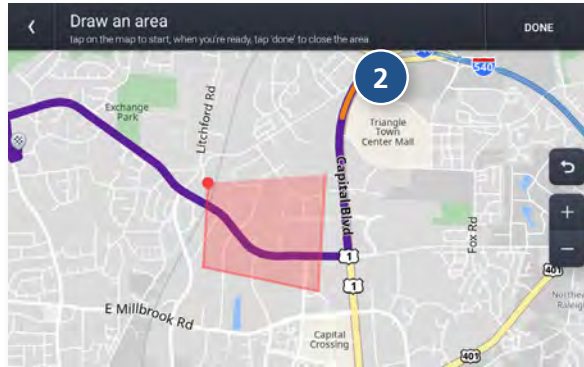


When selecting next miles, use the slider to set the number of miles that are next along your route to avoid. Tap Detour to begin using the new route.

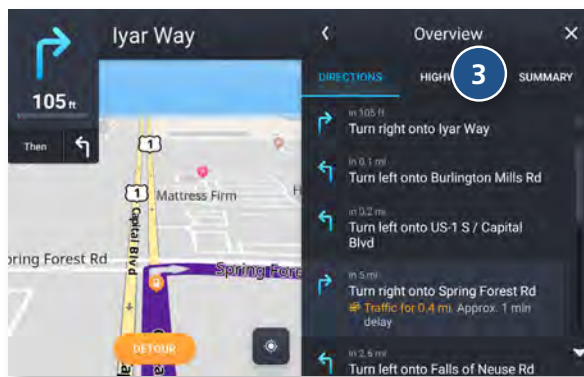


#### Detour/Avoid

When selecting A road, zoom in and out on the map to center the target over the road to avoid. The road is highlighted in red. Tap Permanent Avoid to always avoid it. Tap Detour to avoid it on this trip.

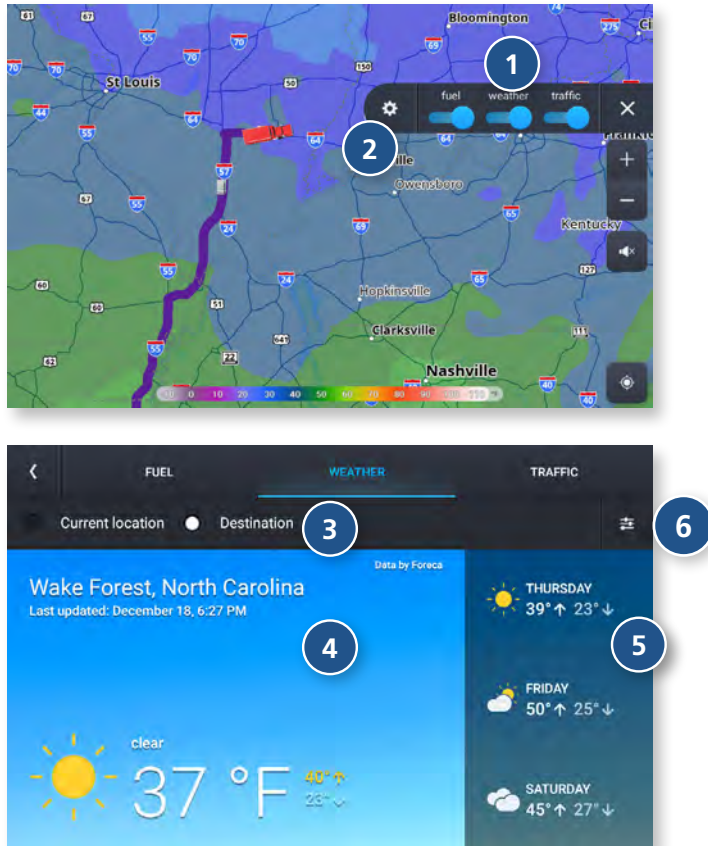


When selecting An area, tap on the map to set points for an area to avoid. Tap Permanent Avoid to always avoid it. Tap Detour to avoid it on this trip.



When selecting Along the route, select the step on the route you wish to avoid. Tap Detour to navigate around it.





## Weather

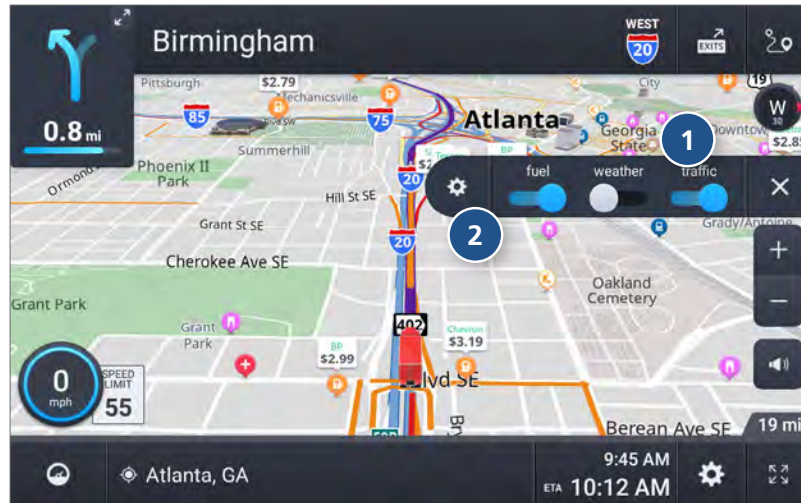
When enabled, Weather displays current weather condition overlays on the map.

### Notes:

- Requires a Wi-Fi connection.
- The refresh speed of the weather display is dependent on the connection speed. Weather information is updated every few minutes while Wi-Fi connection is active.
- Weather display depends on active weather patterns and map zoom level.

To view current weather information and the three-day forecast for your location, tap the gear icon on the map screen and tap the **Weather** tab.

- 1 Tap to enable weather.
- 2 Tap to view details and enter settings.
- 3 Select to view weather at your current location, or at your destination.
- 4 Displays the current weather conditions at the location selected.
- 5 Displays the 3-day forecast for the location selected.
- 6 Tap to view and change weather preferences such as layer opacity and weather type.

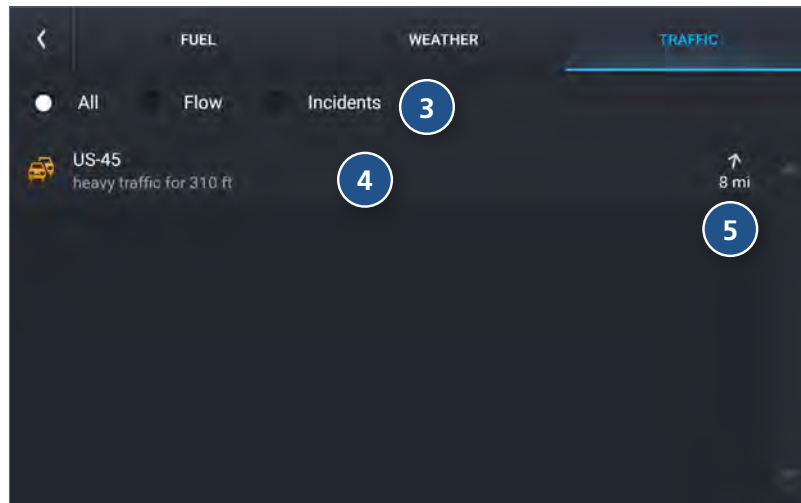


#### Traffic

To view traffic information, tap to enable the **Traffic** slider on the map screen. Traffic conditions will overlay on the map when traffic is enabled.

**Note:** Requires a Wi-Fi connection.

- 1 Tap to enable traffic.
- 2 Tap to view details and enter settings.
- 3 Select to view traffic flow, incidents, or both (All).
- 4 Displays the current traffic conditions/incidents along your route.
- 5 Displays the distance of the traffic conditions/incidents.



## Traffic Icons



Accident



Danger



Traffic Event



Closure



Carriageway



Police



Exit Blocked



Entrance Blocked



Delay



Spillage



Road Work



Road Weather



Rain



Snow



Rock Fall



High Temperature



Low Temperature



Ice



Wind



Thunderstorm



Tornado



Blizzard



Avalanche



Fog



Size Limit



Weight Limit



Visibility

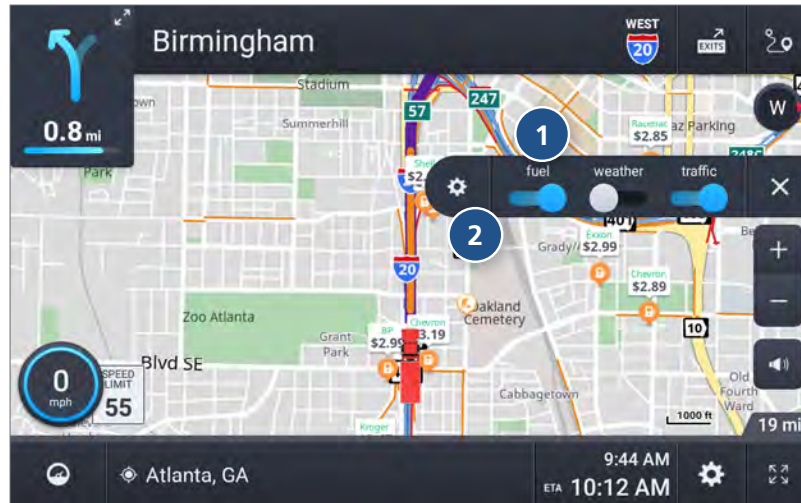
Heavy  
TrafficModerate  
Traffic

Traffic Standstill

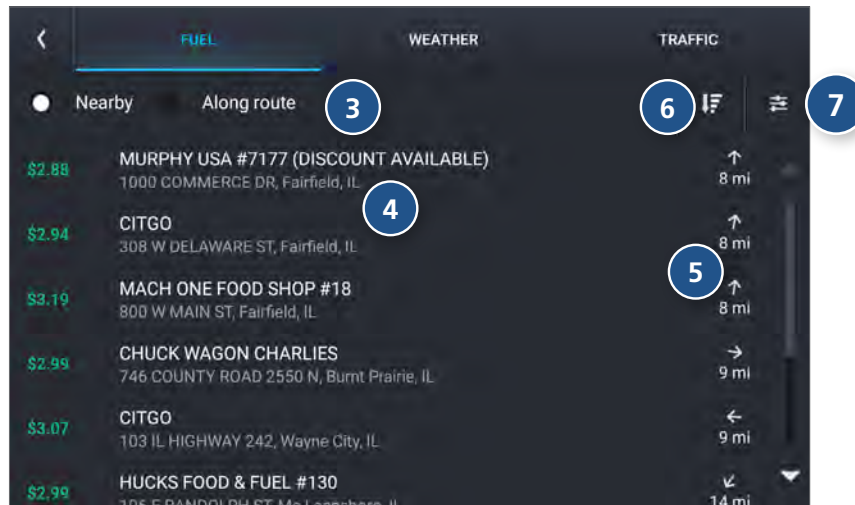
### Fuel

To view fuel price information, tap to enable the **Fuel** slider on the map screen. Current fuel prices will overlay on the map at various stations when enabled.

**Note:** Requires a Wi-Fi connection.



- 1 Tap to enable fuel prices.
- 2 Tap to view details and enter settings.
- 3 Select to view fuel prices nearby, or along your route.
- 4 Displays the fuel stations based on the criteria you selected.
- 5 Displays the distance to each station.
- 6 Tap to sort fuel options.
- 7 Tap to view and change fuel preferences.





### Virtual Dashboard

- 1 Current location.
- 2 Displays current times at the yard, current location and destination, as well as estimated time of arrival.
- 3 Sunrise and sunset times based on vehicle location (latitude/longitude) and day.
- 4 Current speed (above) and posted speed limit (below).  
**Note:** Turns red when speed limit warning exceeded.
- 5 Elevation at current location.
- 6 Current leg progress.
- 7 Gather trip information for up to three trips. Includes odometer settings, hours, and speeds.
- 8 Displays the nearest cross street.
- 9 Current day and date at your location.
- 10 Add fuel purchase information.
- 11 Return to the **Route Map Window**.
- 12 Distance to next maneuver.

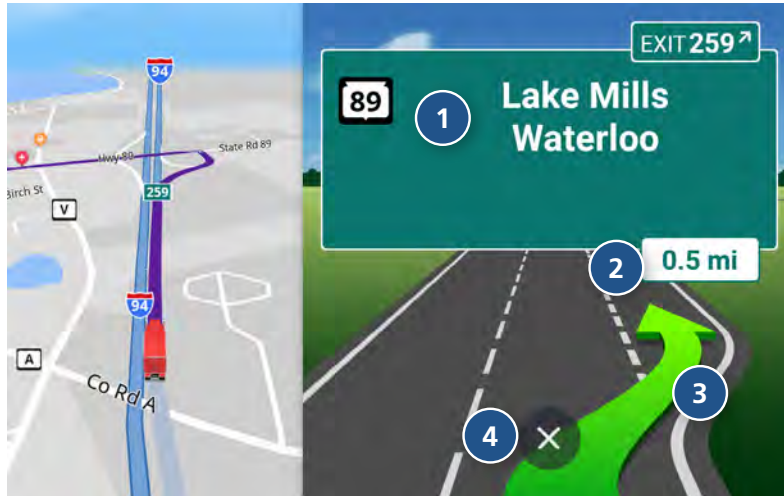


The screenshot shows the 'Add fuel log' screen with the following fields and values:

Field	Value
Fuel quantity	55.000 gal
Fuel price	\$2.949 /gal
Total cost	\$162.20
Taxable	<input checked="" type="checkbox"/>
Location	Barnhill
Station	Enter station
Date	Nov 5, 2019
Last odometer	57,698 mi
Current odometer	58,247 mi
Distance	549 mi
Current economy	10 mpg
Average economy	10 mpg

#### Fuel Logs

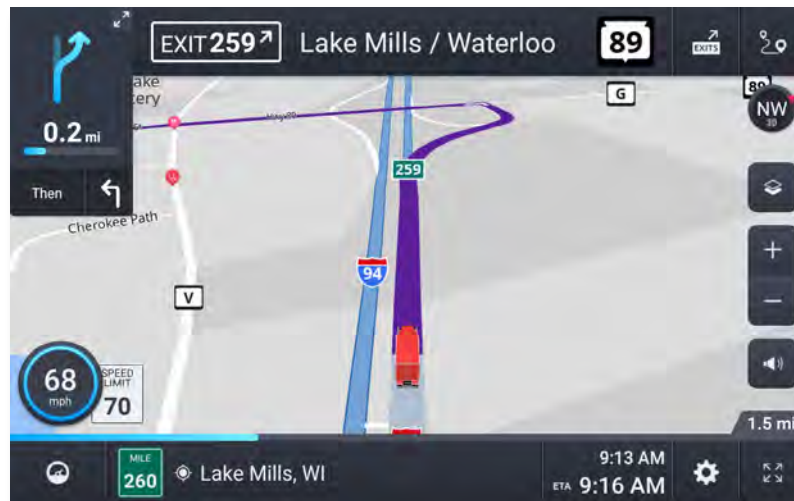
1. From the Virtual Dashboard, tap **Add Fuel**.
2. Tap a field to enter information. You can edit the following fields: Fuel quantity, Fuel price, Total cost, Taxable, Location, Station, Date, Last odometer, Current odometer. Distance, Current economy, and Average economy are calculated automatically based on your entries.
3. Tap **Save** to record the fuel purchase.



#### Junction View

When on a route, Junction Views display when you have an upcoming maneuver. Set distance in **Settings > Route**. Once past the maneuver, Junction View closes and the previous window displays.

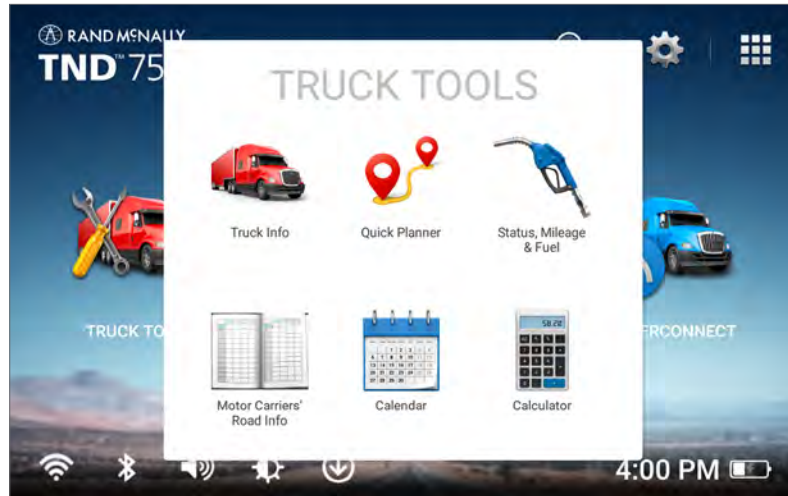
- 1 Signs to follow for the next maneuver. Includes exit number and highway name/number if applicable.
- 2 Distance to the upcoming maneuver. Distance decreases as you approach the ramp.
- 3 Lane assist arrow.
- 4 Return to previous window.



#### Turn View

Displays for upcoming turns. Set distance in **Settings > Route**.



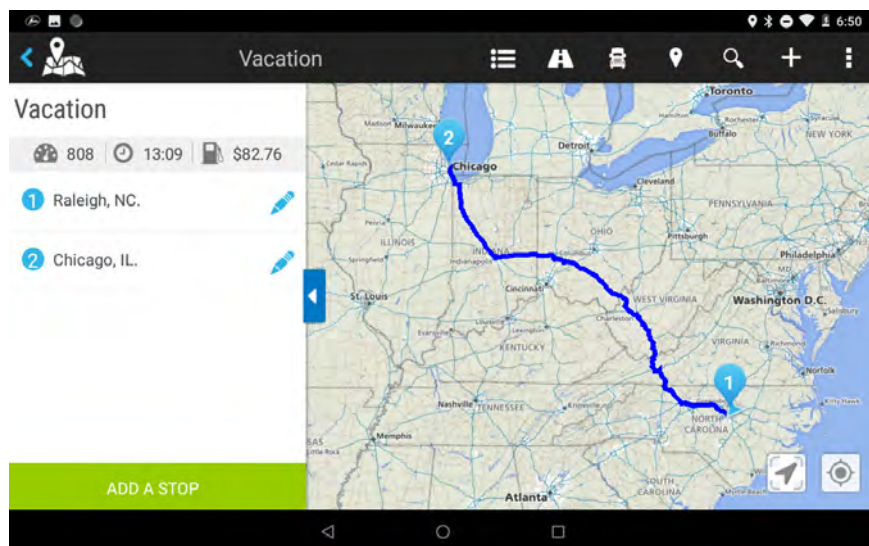


### Truck Tools

To access, tap Truck Tools from the Main Menu.

- 1 **Truck Info**  
Enter hazmat, weight, height, width, trailer and axle information.
- 2 **Status, Mileage & Fuel**  
View driving information, mileage logs, and fuel purchase information.
- 3 **Rand Motor Carriers' Road Info**  
View Rand McNally Truck Emergency contact information and truck regulations.
- 4 **Quick Planner**  
Between any two cities or towns, quickly calculate the distance, driving time, and cost.

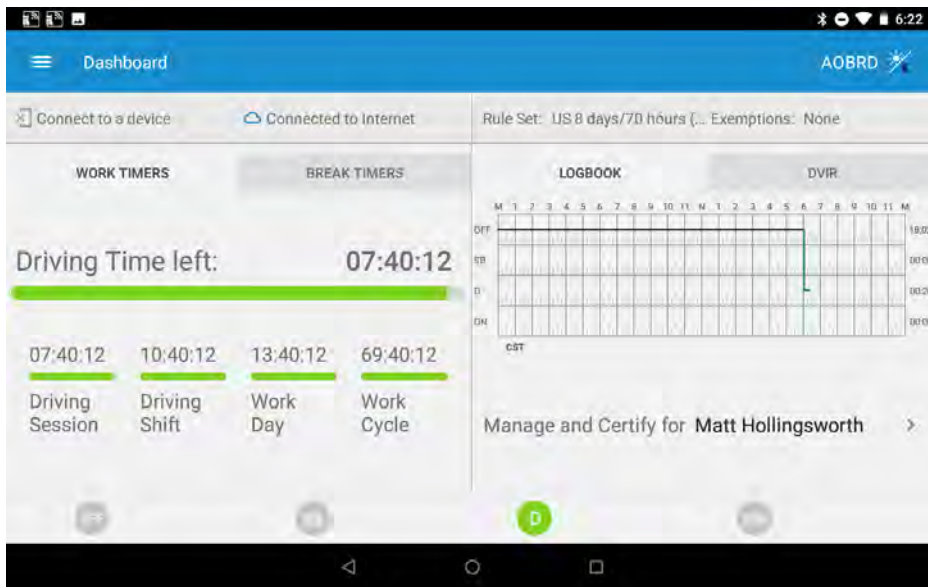
- 5 **Calendar**
- 6 **Calculator**
- 7 **Unit Converter**  
Quickly convert distance, weight, temperature, and many more.
- 8 **Notes**
- 9 **Tell Rand**  
Compose a message to send to Rand McNally.
- 10 **GPS Repair**  
Fix missing or out-of-date files for your navigation system.
- 11 **Device Registration**
- 12 **Import Data & Export Data**  
Transfer address books, custom POIs, and saved trips from your old TND device.
- 13 **BackUp**  
Backup and restore utility.
- 14 **System Settings**  
Access Android settings.
- 15 **Get Apps**



TripMaker is a trip planning app that allows you to easily browse the map and set up a multi-stop trip. Add via points and send your trip to the Rand Navigation 2.0 app for truck-friendly routing.

**Please note that TripMaker does not provide truck routing.**

View Help in the TripMaker app to learn more.



### DriverConnect

The DriverConnect app provides a fully-compliant electronic logbook solution. DriverConnect lets you track and log Hours of Services, Driver-Vehicle Inspection Reports, Fuel purchases, and more. Reports can be generated for roadside inspections.

The DriverConnect app connects to a Rand McNally Electronic Logging Device (ELD) over a Bluetooth connection. The app automatically syncs driving data from the ELD with the Rand McNally DriverConnect portal via a Wi-Fi or cellular transmission.

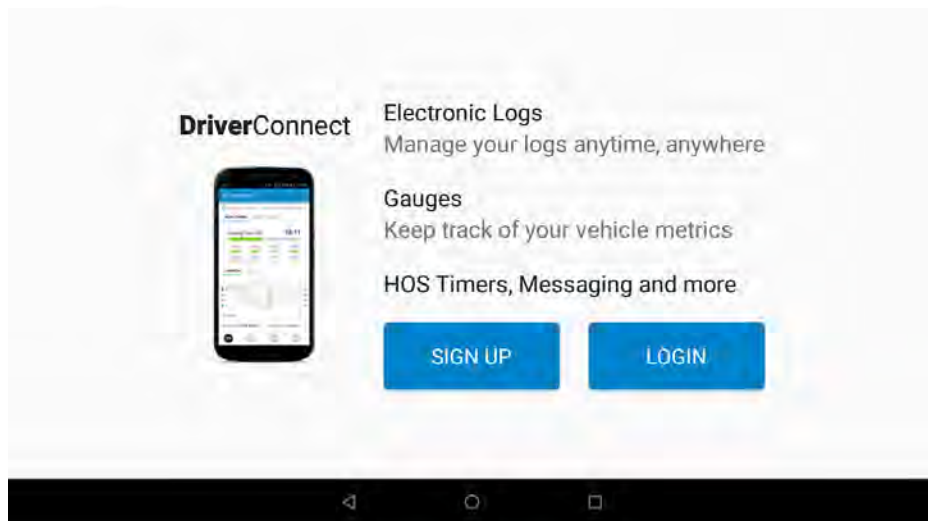
Visit <http://www.randmcnally.com/category/e-logs> for up-to-date information on compatible ELDs.

### Sign Up or Log In

To use DriverConnect, you must log in with an existing account, or create a new account. If you are part of a fleet, your Fleet Manager will provide login information for you.

You can use your login information to access the DriverConnect portal, where you can view reports and stored information.

Visit <https://www.driverconnect.randmcnally.com> to access the DriverConnect portal.



### For more information

- Rand McNally Website  
[www.randmcnally.com/trucking](http://www.randmcnally.com/trucking)
- Support  
[www.randmcnally.com/support](http://www.randmcnally.com/support)
- GPS accessories  
[store.randmcnally.com](http://store.randmcnally.com)
- Facebook  
[www.facebook.com/randtrucking](http://www.facebook.com/randtrucking)

## Trademarks

Rand McNally, the Rand McNally logo, the globe logo, and IntelliRoute are registered trademarks and TND is a trademark of RM Acquisition LLC, d/b/a Rand McNally.

The Trucker's Friend and National Truck Stop Directory are registered trademarks of TR Information Publishers.

TruckDown is a registered trademark of TruckDown Info International, Inc.

Wi-Fi is a registered trademark of the Wi-Fi Alliance.

Weather data provided by FORECA.

Fuel prices provided by OPIS.

Traffic information provided by INRIX, Inc.

© 2020 Rand McNally. © 2020 HERE. All rights reserved.

Rand McNally follows a continuous improvement process and reserves the right to provide enhancements that may not be reflected in the pictures and specifications in this manual.

The information contained herein may be changed at any time without prior notification. Neither this manual nor any parts thereof may be reproduced for any purpose whatsoever without the express written consent of Rand McNally, Inc., nor may it be transmitted in any form either electronically or mechanically, including photocopying, and recording. All technical specifications, drawings, etc. are subject to copyright law.